

GROUP 52A

INTERIOR

CONTENTS

<p>ADHESIVE..... 52A-2</p> <p>SPECIAL TOOL..... 52A-2</p> <p>INSTRUMENT PANEL ASSEMBLY..... 52A-2 REMOVAL AND INSTALLATION..... 52A-2 DISASSEMBLY AND ASSEMBLY..... 52A-7</p> <p>FLOOR CONSOLE ASSEMBLY..... 52A-8 FRONT FLOOR CONSOLE ASSEMBLY 52A-8 REMOVAL AND INSTALLATION..... 52A-8 REAR FLOOR CONSOLE ASSEMBLY 52A-9 REMOVAL AND INSTALLATION..... 52A-9</p> <p>TRIMS..... 52A-10 INTERIOR TRIM..... 52A-10 REMOVAL AND INSTALLATION..... 52A-10 DOOR TRIM..... 52A-11 REMOVAL AND INSTALLATION..... 52A-11 LIFTGATE TRIM..... 52A-14 REMOVAL AND INSTALLATION..... 52A-14</p> <p>HEADLINING..... 52A-15 REMOVAL AND INSTALLATION..... 52A-15</p> <p>INTERIOR MIRROR..... 52A-17</p> <p>SEAT ASSEMBLY..... 52A-18</p>	<p>FRONT SEAT ASSEMBLY..... 52A-18 REMOVAL AND INSTALLATION..... 52A-18 INSPECTION..... 52A-20 SECOND SEAT ASSEMBLY..... 52A-21 REMOVAL AND INSTALLATION..... 52A-21 THIRD SEAT ASSEMBLY..... 52A-22 REMOVAL AND INSTALLATION..... 52A-22</p> <p>SEAT BELT..... 52A-22 FRONT SEAT BELT..... 52A-22 REMOVAL AND INSTALLATION..... 52A-22 INSPECTION..... 52A-24 REAR SEAT BELT..... 52A-24 REMOVAL AND INSTALLATION..... 52A-24</p>
--	--

ADHESIVE

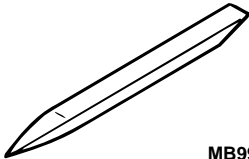
M1520100005USA0000010000

Application	Brand name
Interior mirror	Interior mirror adhesive kit MU-150Kit [MZ100425]

NOTE: The symbol in parentheses indicates a part number.

SPECIAL TOOL

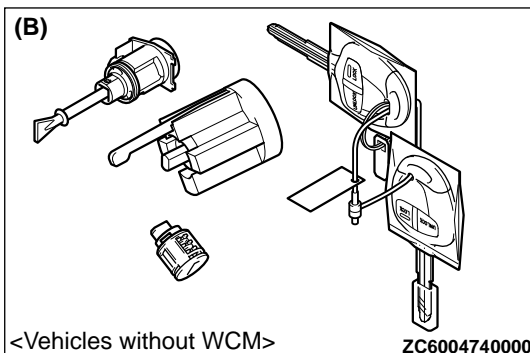
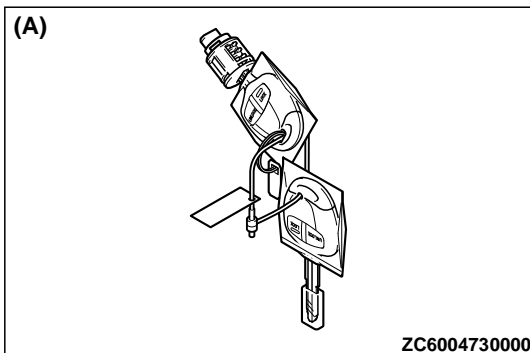
M1520100006USA0000010000

Tool	Tool number and name	Supersession	Application
 MB990784	MB990784 Ornament remover	General service tool	Removal of switch, trim, etc.

INSTRUMENT PANEL ASSEMBLY

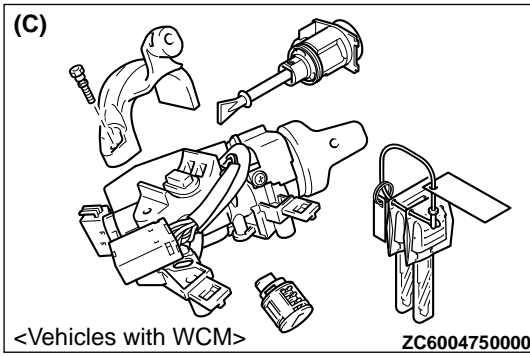
REMOVAL AND INSTALLATION

M15201000017USA0000010000

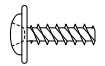
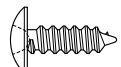
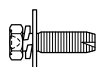
**CAUTION**

•When a supply unit of the glove box lock cylinder shown in the illustration (A) is replaced, do not register a transponder ID using the bar code which is attached to the ignition key supplied simultaneously. If the transponder ID is registered with the attached bar code, the engine cannot start. However, only for vehicles without WCM, when one ignition key is used both for lock cylinder and engine start-up, it is necessary to replace a key set shown in the illustration (B).

•When a key set in the illustration (B) is replaced, always register the transponder ID.



The following bolts and screws are used for installing the instrument panel: The bolts and screws are indicated by symbols in the illustrations in sections "REMOVAL AND INSTALLATION" and "DISASSEMBLY AND ASSEMBLY."

Name	Symbol	Dimensions mm (screw diameter × screw length)	Color	Shape
Tapping screw	a	5 × 12	-	 ZC501326AA00
	b	5 × 16	-	
	c	5 × 16	Black	
	d	5 × 20	-	
	e	5 × 12	Black	 ZC501327AA00
	f	5 × 14	-	
Washer-assembled bolt	g	6 × 16	-	 ZC600476AA00

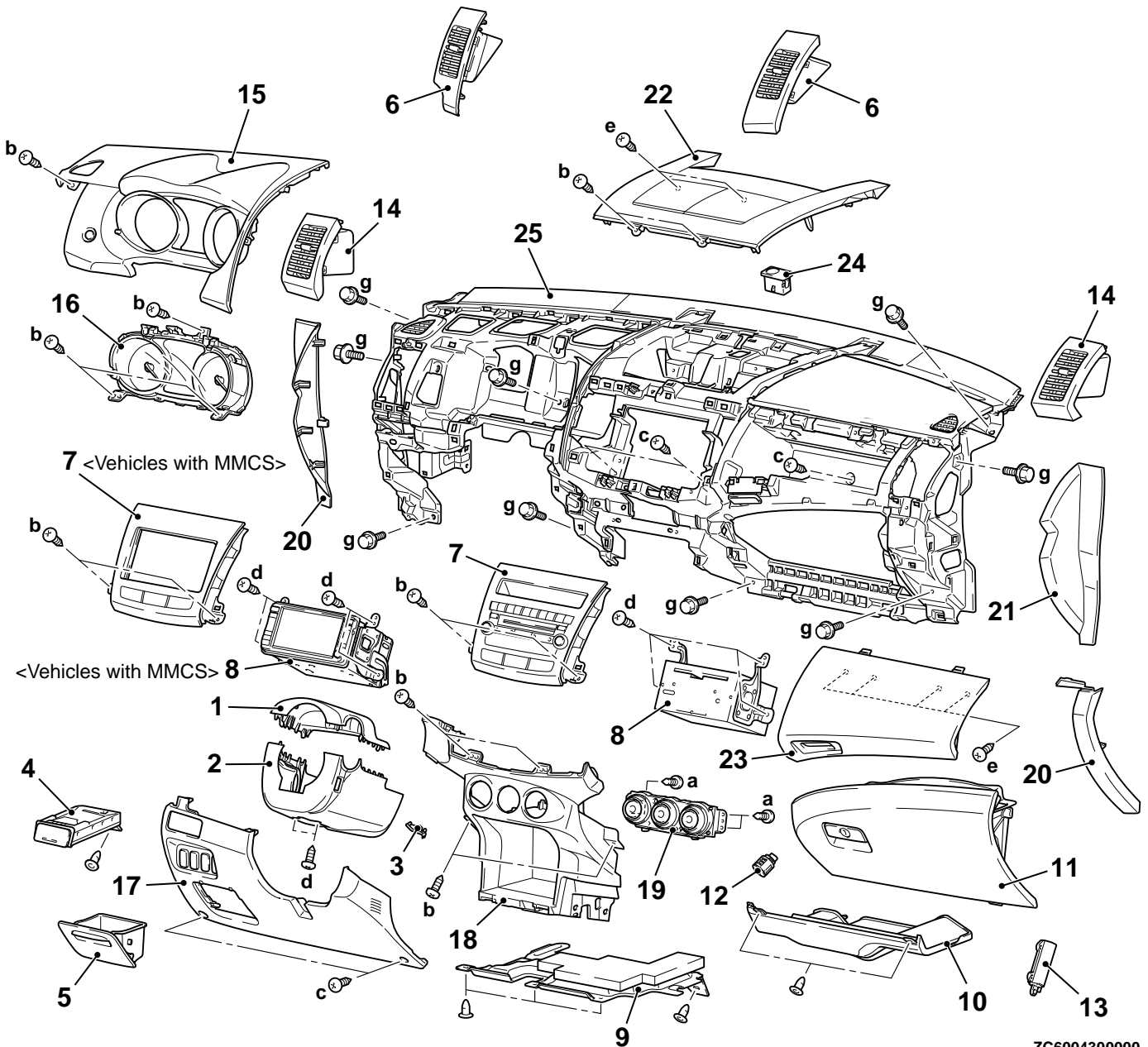
CAUTION

*For the removal of the front passenger's air bag module, refer to GROUP 52B - Service Precautions P.52B-329, Driver's and Front

Passenger's Air Bag Module, and Clock Spring before operation.

*Do not subject SRS-ECU to any shocks when removing or installing the instrument panel.

INTERIOR
INSTRUMENT PANEL ASSEMBLY



ZC6004300000

Removal steps

1. Steering column upper cover
2. Steering column lower cover
3. Ignition key cover
4. Cup holder assembly
5. Side box
6. Center air outlet
7. Center panel assembly
8. Center panel box vehicles with audio or 6 disc CD autochanger & AM/FM radio
9. Bottom cover assembly (driver's seat)

Removal steps

10. Bottom cover assembly (front passenger's seat)
- Glove box lamp connector
11. Glove box assembly
12. Glove box lock cylinder
13. Glove box dumper
14. Side air outlet
15. Combination meter bezel
16. Combination meter assembly
17. Side lower panel assembly
- Lower side cover (Refer to P. 52A-8).

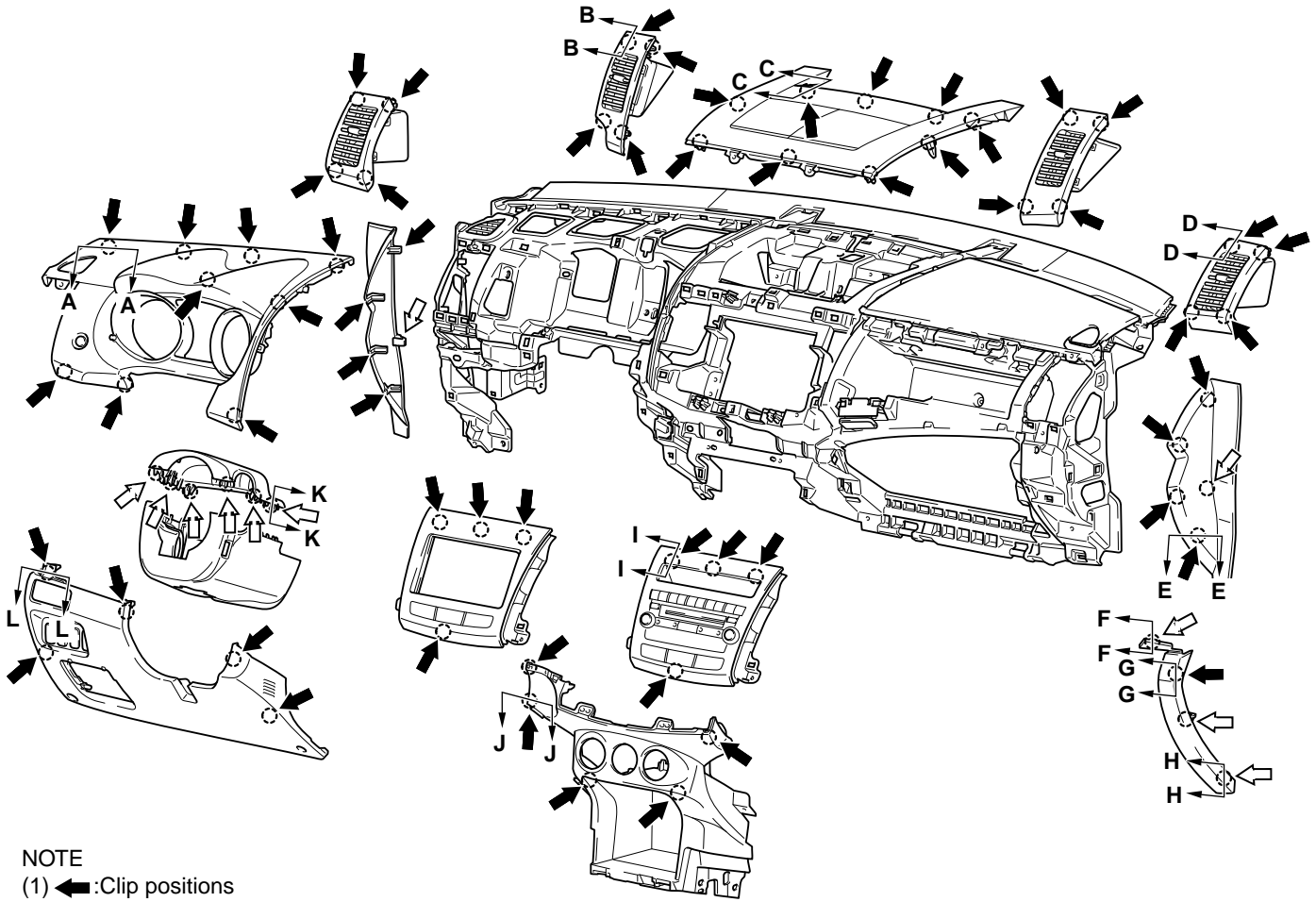
Removal steps

18. Center lower panel
19. A/C control panel
20. Side cover
21. Glove box side panel
22. Center upper box assembly

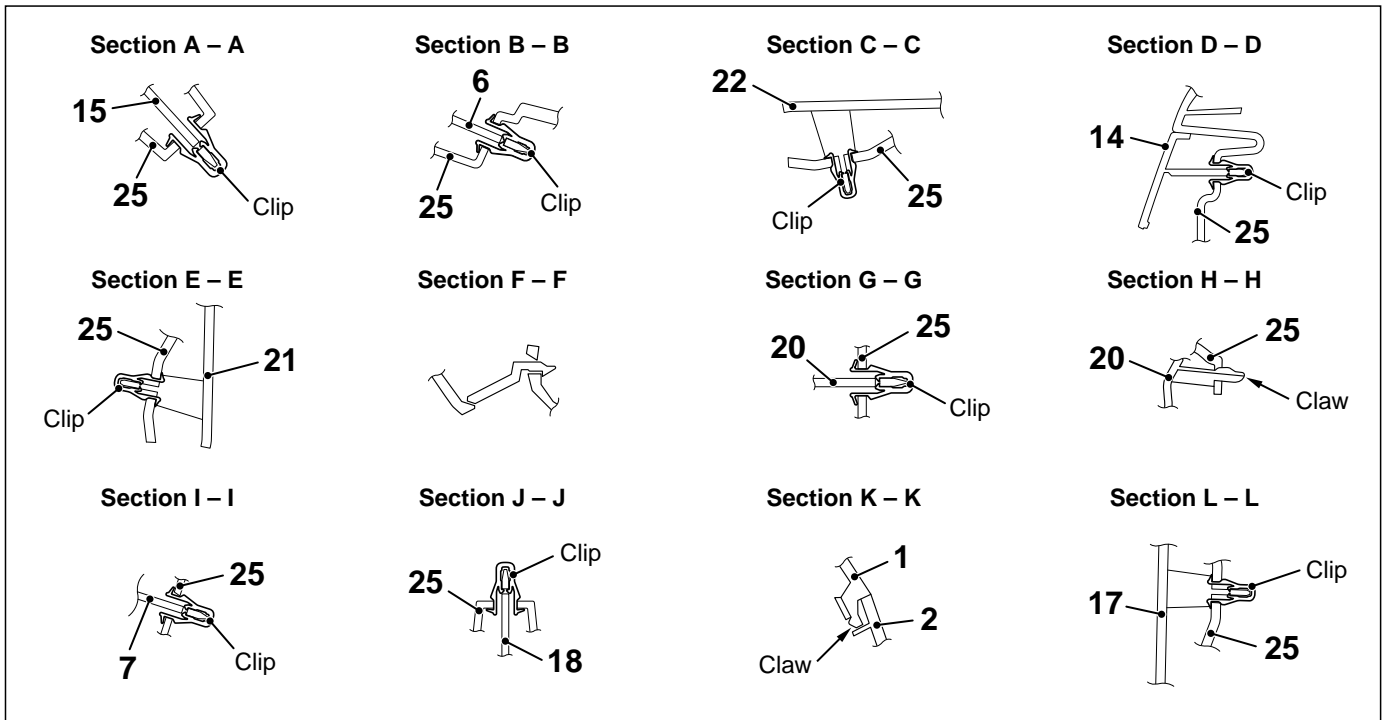
Removal steps

23. Upper glove box assembly
- Steering wheel (Refer to GROUP 37 - Steering Wheel P.37-20).
24. Solar sensor
25. Instrument panel assembly

CLIP AND CLAW POSITIONS



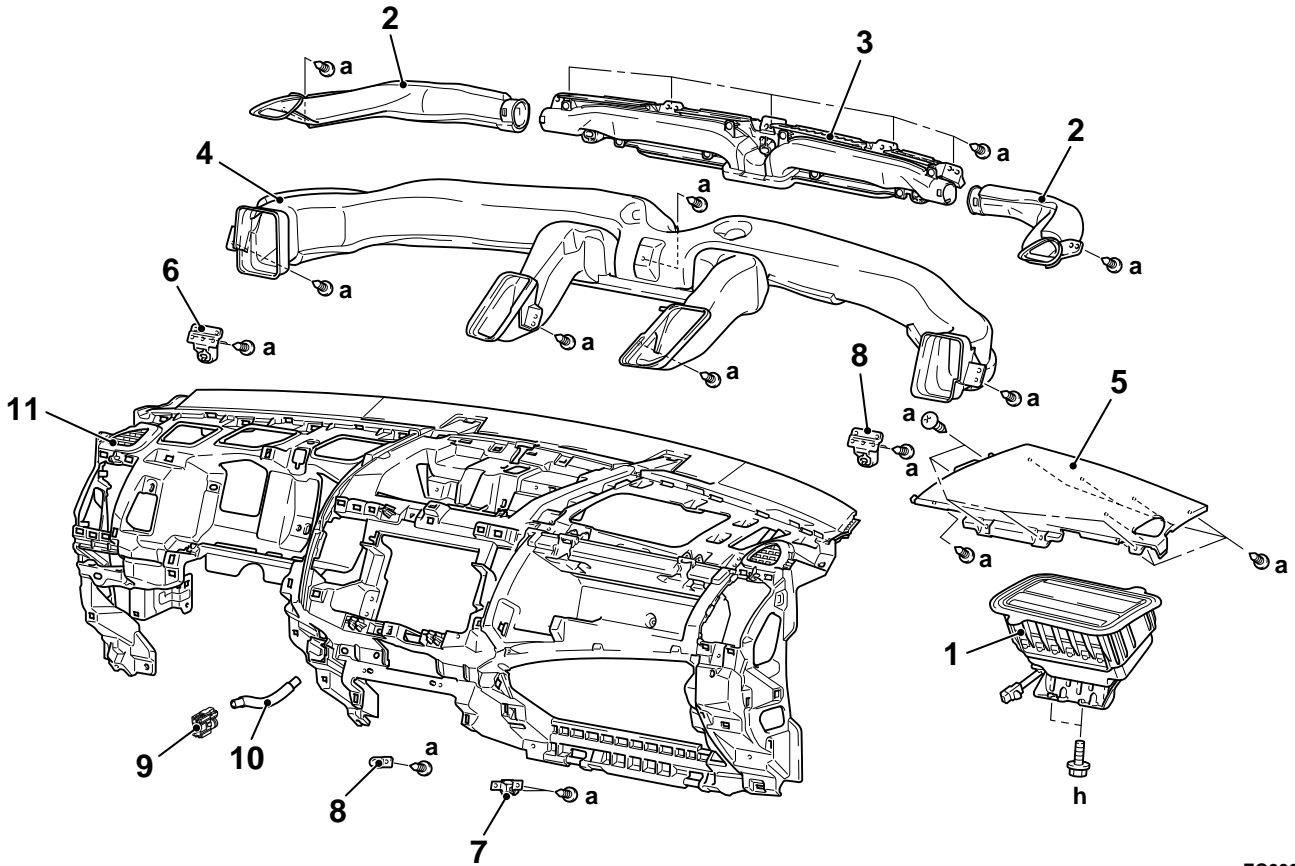
NOTE
(1) :Clip positions
(2) :Claw positions



NOTE: Each number in the illustration indicates a part number.

DISASSEMBLY AND ASSEMBLY

M15201000019USA0000010000



ZC6005410000

Disassembly steps

1. Front passenger's seat air bag module (Refer to GROUP 52B, - Driver's and Front Passenger's Air Bag Modules and Clock Spring P.52B-329).
2. Side defroster nozzle
3. Center defroster nozzle
4. Ventilation air distribution
5. Front passenger's air bag lid assembly

Disassembly steps

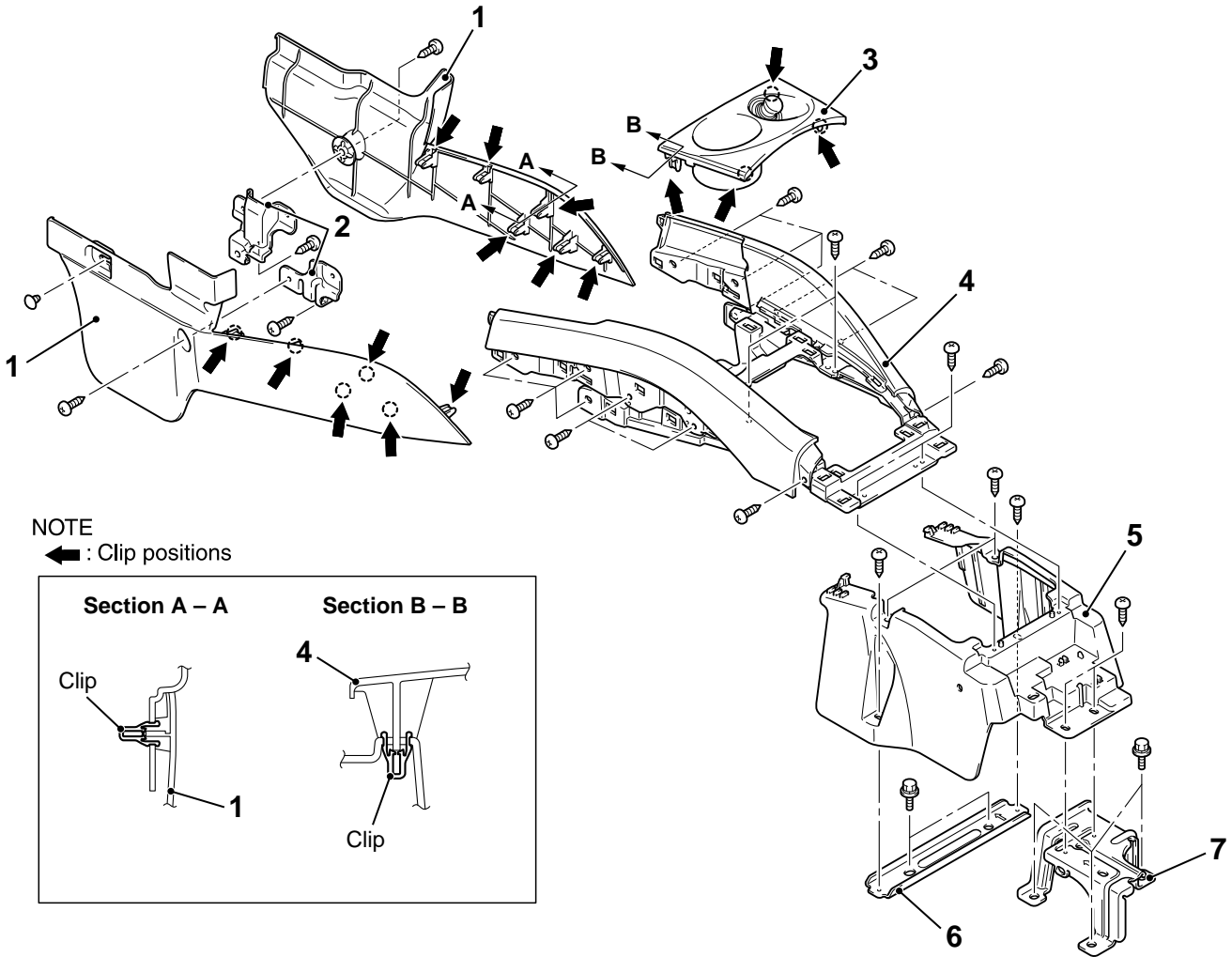
6. Instrument holder
7. Glove box light bracket
8. Wiring harness bracket
9. Interior temperature sensor
10. Aspirator hose
11. Instrument panel

FLOOR CONSOLE ASSEMBLY

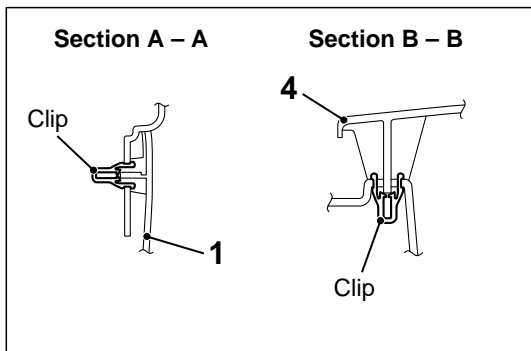
FRONT FLOOR CONSOLE ASSEMBLY

REMOVAL AND INSTALLATION

M15201000052USA0000010000



NOTE
← : Clip positions



ZC6005750000

Removal steps

1. Lower side cover
2. Front floor console bracket
- Cigarette Lighter connector
3. Front floor console panel
- Rear floor console assembly (Refer to P.52A-9).
4. Front floor console assembly

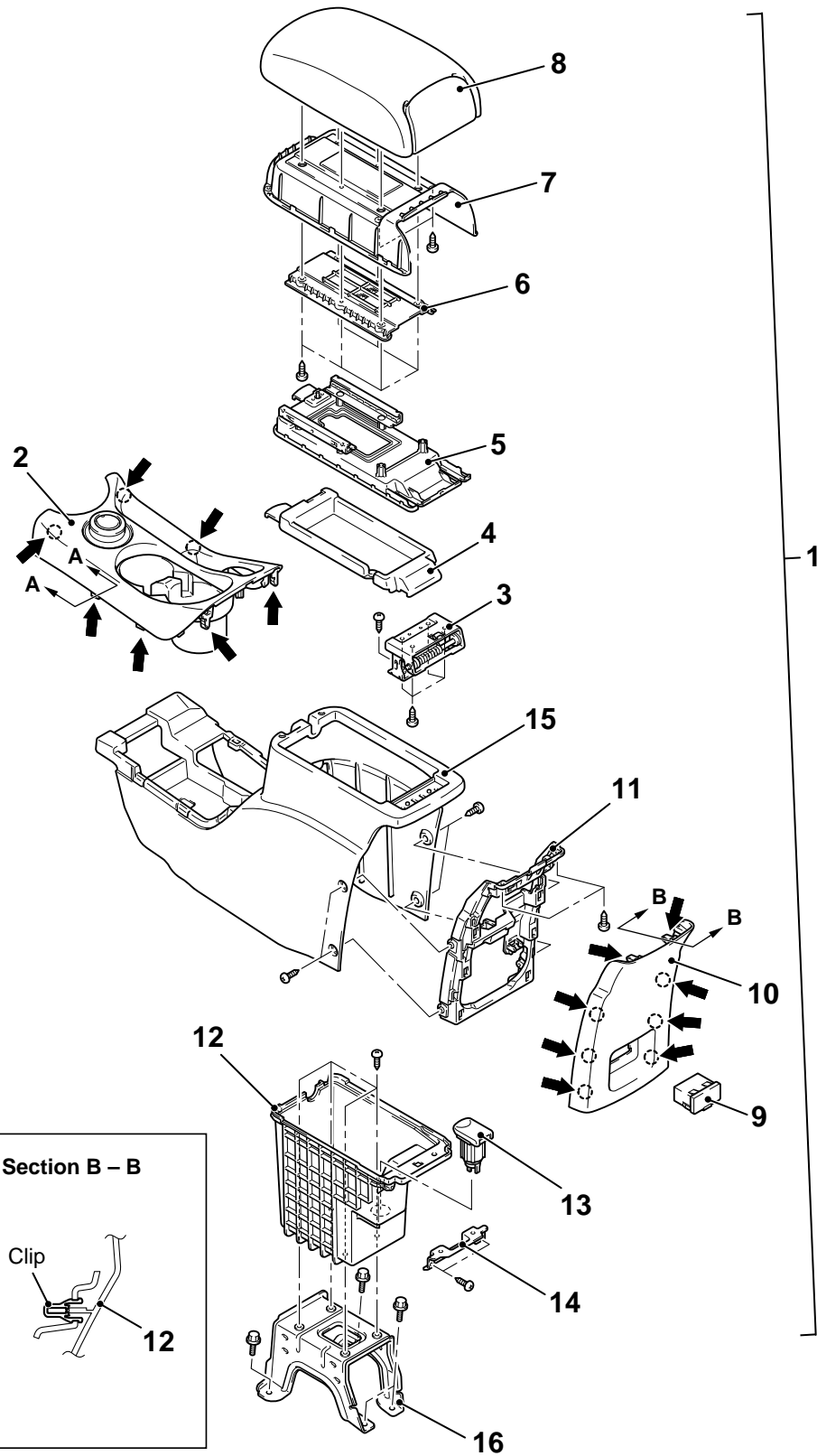
Removal steps

- Interior transmission antenna (front) (Refer to GROUP 42B, Exterior Transmission Antenna, Interior Transmission Antenna Assembly, Receiver Antenna Module P.42B-176).
- 5. Front floor console base
- 6. Front floor console base bracket
- 7. Front floor console mid bracket

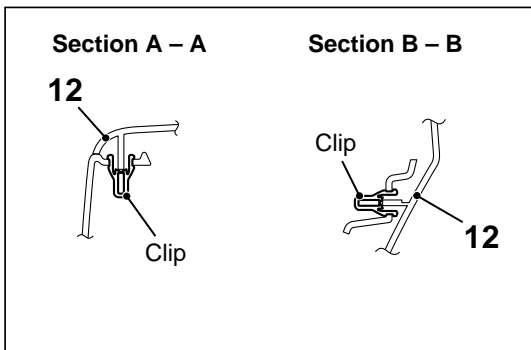
REAR FLOOR CONSOLE ASSEMBLY

REMOVAL AND INSTALLATION

M15201000057USA0000010000



NOTE
← : Clip positions



Disassembly steps

1. Rear floor console assembly
- AWD selector switch connector
2. Rear floor console front panel assembly
3. Hinge assembly
4. Armrest box
5. Slide base outer
6. Slide base inner
7. Armrest lid inner
8. Armrest lid cover
9. VTR adapter assembly

Disassembly steps

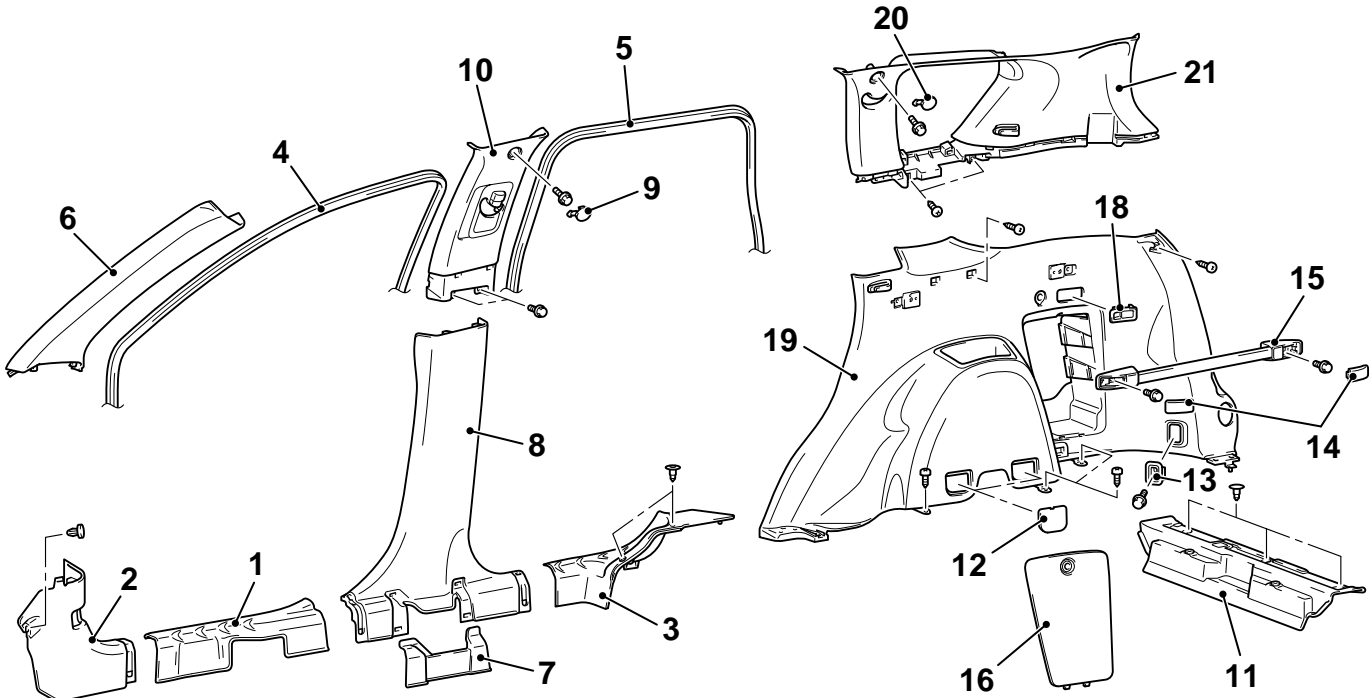
10. Rear floor console rear panel
11. Rear floor console rear panel frame
12. Rear floor console box
13. Accessory socket
14. Rear floor console box bracket
- Accessory socket connector
- VTR adapter connector
15. Rear floor console
16. Rear floor console bracket

TRIMS

INTERIOR TRIM

REMOVAL AND INSTALLATION

M15201000011USA0000010000



ZC6005780000

1. Front scuff plate
2. Cowl side trim
3. Rear scuff plate
4. Front door opening trim
5. Rear door opening trim
6. Front pillar trim
7. Center pillar trim lower cover

- Seat belt pre-tensioner connector
8. Center pillar trim, lower
9. Center pillar trim upper cap
10. Center pillar trim, upper
11. Rear end trim

Quarter trim lower and quarter trim upper removal steps

12. Maintenance lid
13. Cargo hook assembly
14. Utility bar cover
15. Utility bar
16. Jack lid assembly
17. Tumble switch

Quarter trim lower and quarter trim upper removal steps

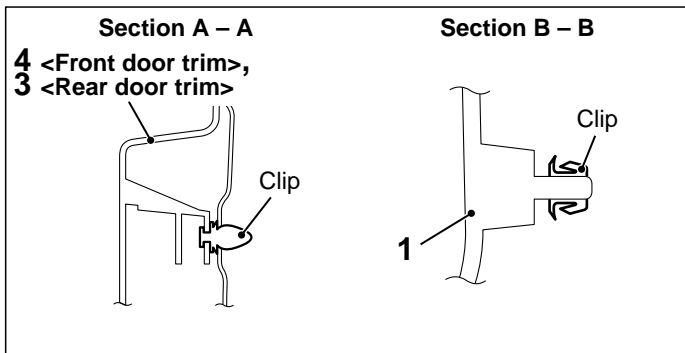
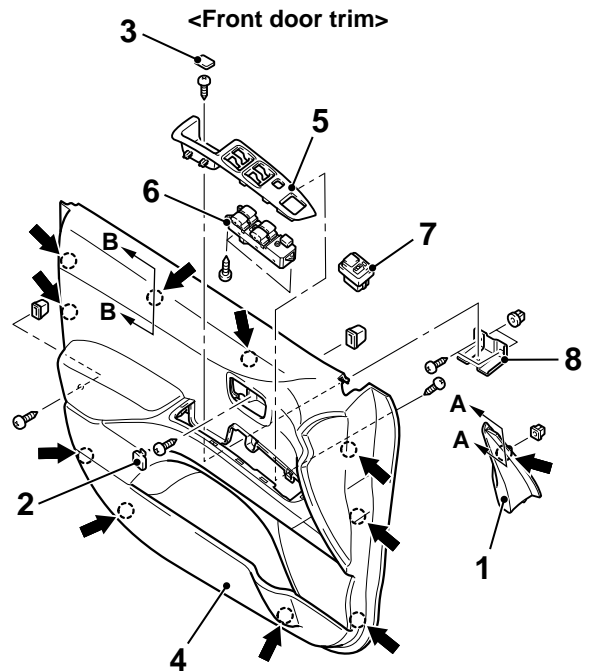
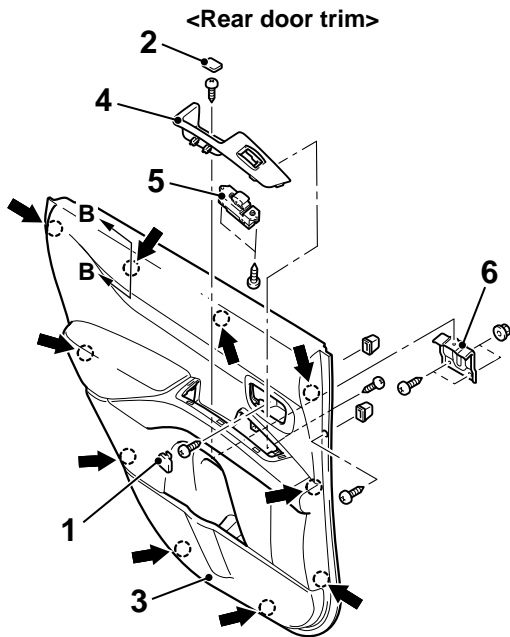
18. Quarter trim, lower
19. Sash guide cover
20. Quarter trim upper cap
21. Quarter trim, upper

NOTE: For the vehicles with curtain air bag, install the front pillar trim and quarter trim upper provided for curtain air bag.

DOOR TRIM

REMOVAL AND INSTALLATION

M15201000064USA0000010000



NOTE
 : Clip positions

Front door trim removal steps

1. Tweeter connector

Front door trim removal steps

- >>A<< 1. Front door sash trim

ZC6021560000

Front door trim removal steps

- <<A>> 2. Inside handle cover cap
3. Door trim cap
<> >>B<< 4. Front door trim <<A>>
5. Power window switch panel
· Power window switch connector <> >>B<<
6. Power window switch
· Remote-controlled mirror switch connector (RH)
7. Remote-controlled mirror switch (RH)

Front door trim removal steps

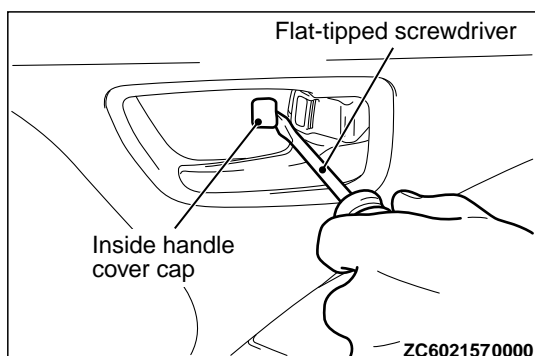
8. Front door pull handle bracket

Rear door trim removal steps

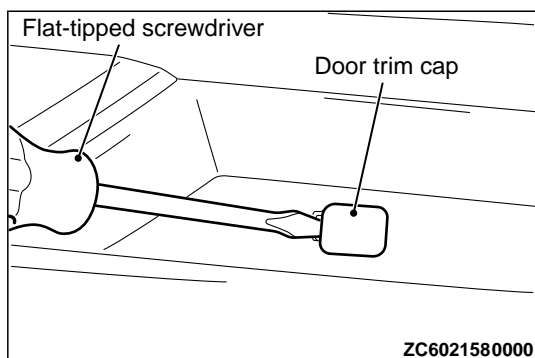
1. Inside handle cover cap
2. Door trim cap
3. Rear door trim
4. Power window switch panel
· Rear power window sub-switch connector
5. Power window switch
6. Rear door armrest bracket

REMOVAL SERVICE POINTS**<<A>> INSIDE HANDLE COVER CAP REMOVAL**

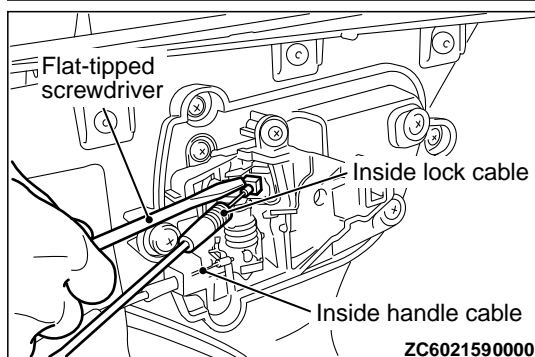
Insert a flat-tipped (-) screwdriver as shown in the figure to remove the inside handle cover cap.

**<> FRONT/REAR DOOR TRIM REMOVAL**

1. Insert a flat-tipped (-) screwdriver as shown in the figure to remove the door trim cap.



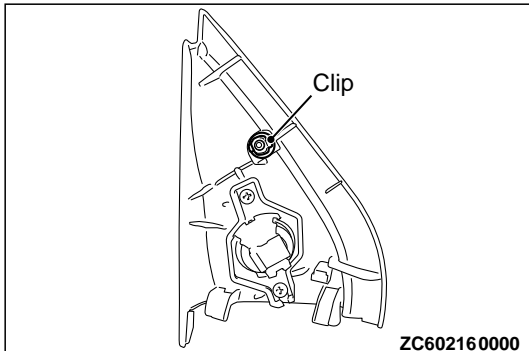
2. Using a flat-tipped (-) screwdriver as shown in the figure, remove the inside lock cable and the inside handle cable, then remove the door trim.



INSTALLATION SERVICE POINTS

>>A<< FRONT DOOR SASH TRIM INSTALLATION

Install it with the clip attached as shown in the figure.



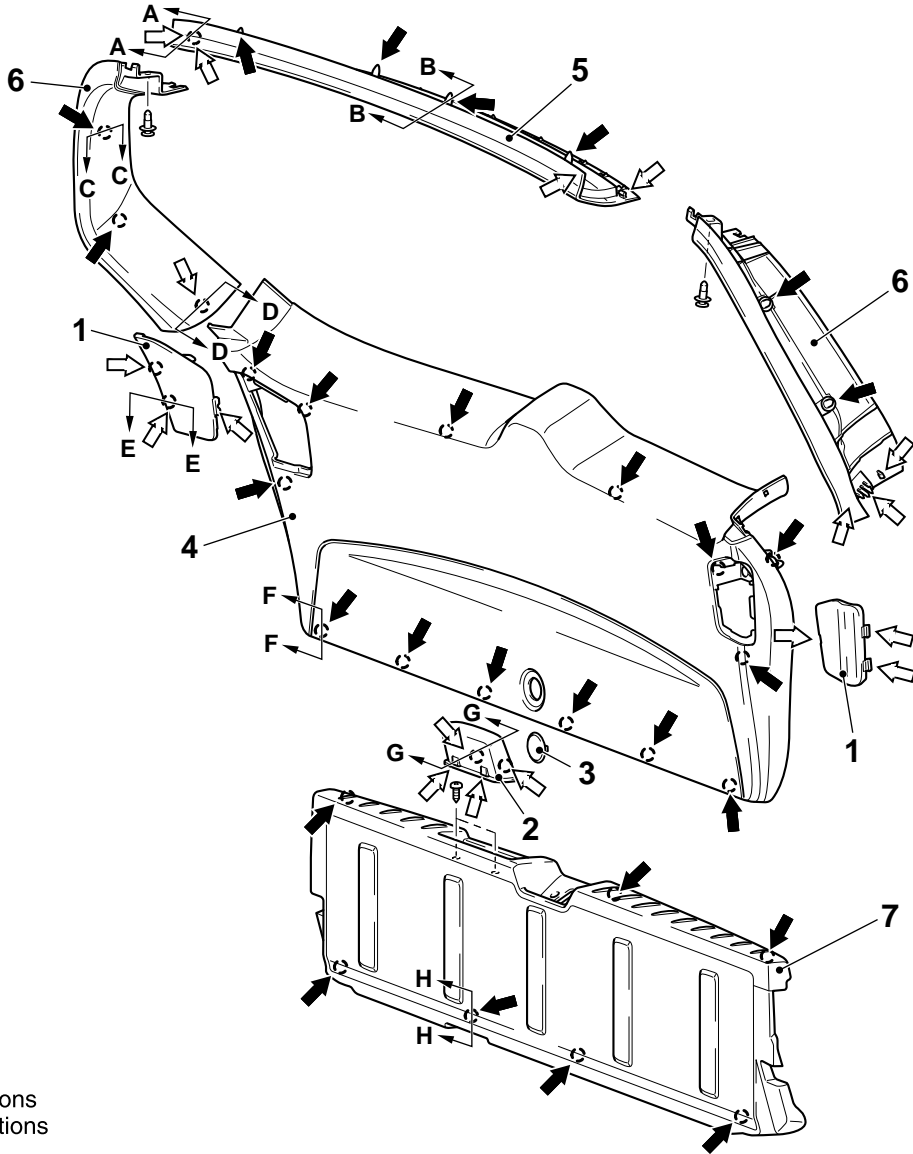
>>B<< FRONT DOOR/REAR DOOR TRIM INSTALLATION

After the power window switch is installed or replaced, perform learning of the power window fully-closed position. (Refer to GROUP 42Ab - Door Glass and Regulator P.42Ab-97.)

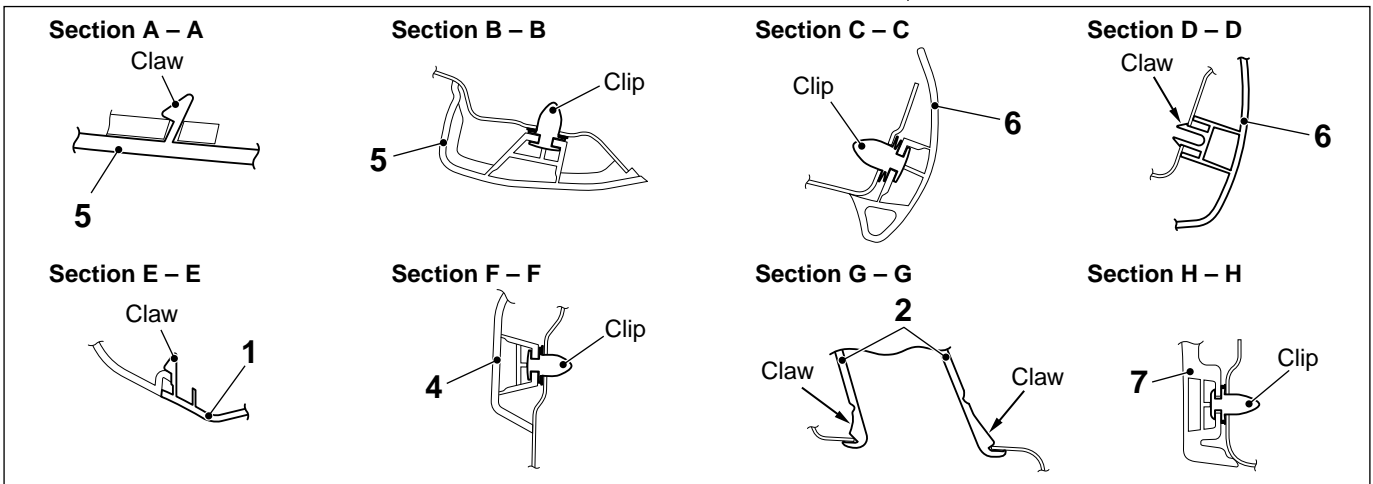
LIFTGATE TRIM

REMOVAL AND INSTALLATION

M1520100065USA0000010000



NOTE
 (1) : Clip positions
 (2) : Claw positions



Removal steps

1. Liftgate cover garnish
2. Liftgate pull handle
3. Liftgate trim cap
4. Liftgate trim

Removal steps

5. Liftgate upper trim
6. Liftgate opening side trim
7. Lower liftgate trim

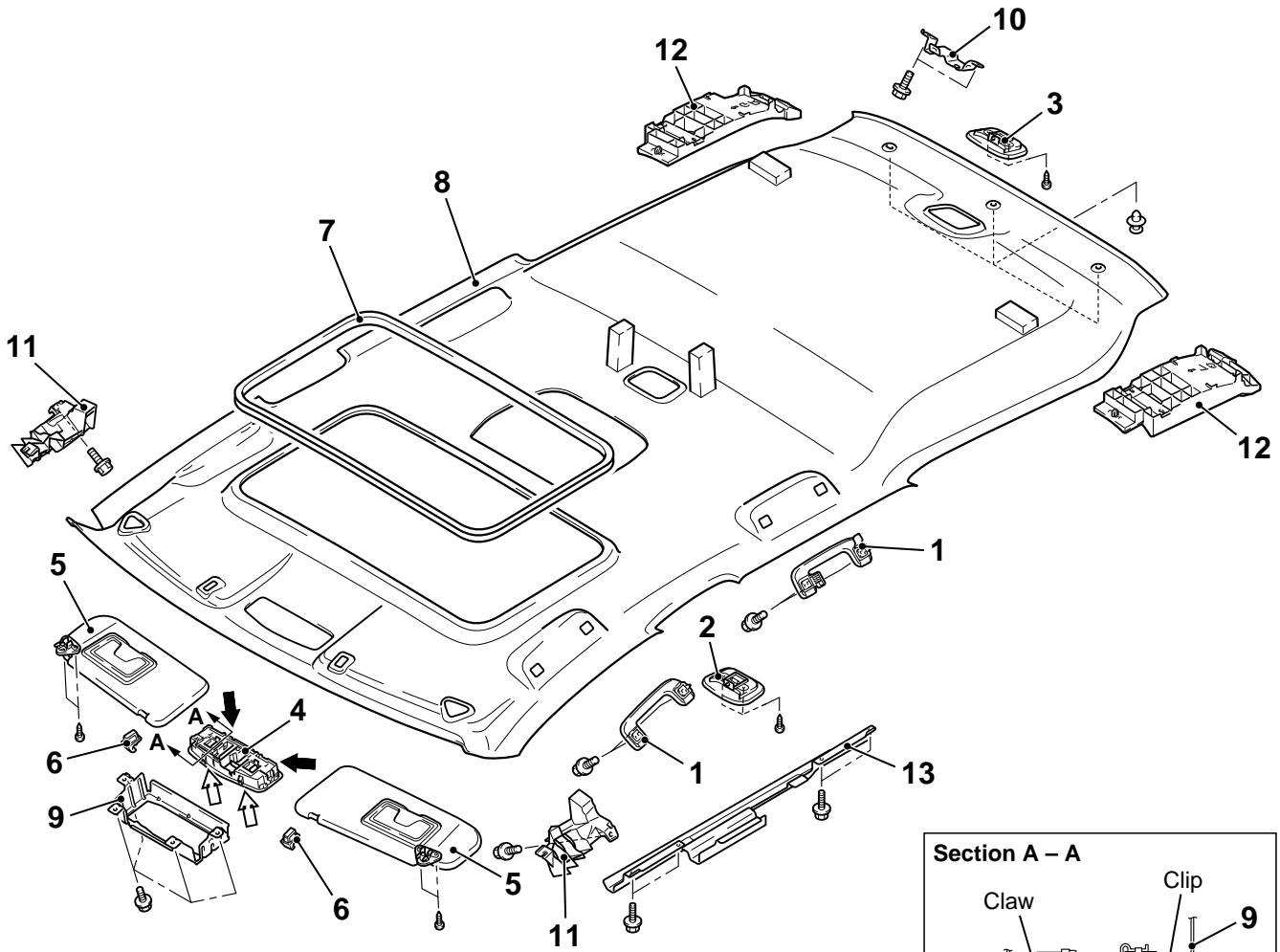
HEADLINING

REMOVAL AND INSTALLATION

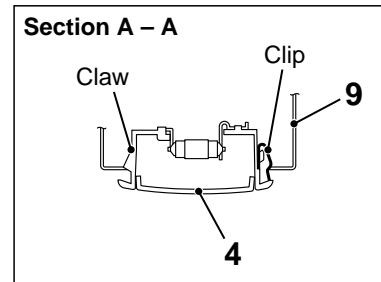
M15201000014USA0000010001

 CAUTION

For the removal of the headlining, refer to **GROUP 52B - Service Precautions (Refer to P.52B-28) and Curtain Air Bag Module (Refer to P.52B-329).**



NOTE
 (1) : Clip positions
 (2) : Claw positions



ZC604264AA00

Removal steps

- Quarter trim upper, center pillar trim upper, and front pillar trim (Refer to P. 52A-10). <<A>>
- Rear monitor (Refer to GROUP 54A - Rear Monitor). <>
- 1. Assist grip
- 2. Rear dome light assembly
- 3. Luggage compartment light assembly
- Front dome light connector
- Sunroof switch connector <Vehicles with sunroof>
- 4. Front dome light assembly
- 5. Sun visor

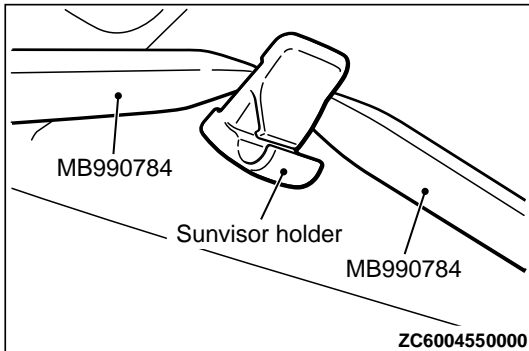
Removal steps

- 6. Sun visor holder
- 7. Sunroof lid inner weather strip rear <Vehicles with sunroof>
- 8. Headlining
- 9. Front dome light bracket
- 10. Luggage compartment light bracket
- 11. Front energy absorber roof side box
- 12. Rear energy absorber roof box <Vehicles without curtain air bag>
- 13. Front energy absorber roof bracket <Vehicles with sunroof>

REMOVAL SERVICE POINTS

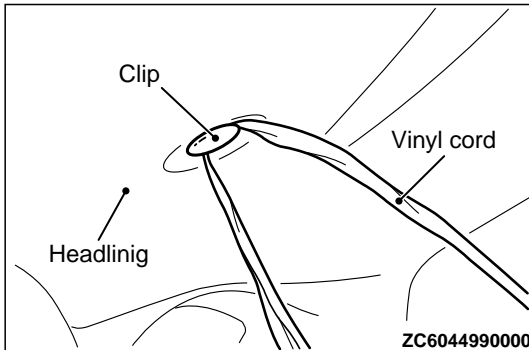
<<A>> SUN VISOR HOLDER REMOVAL

Insert the special tools into the sun visor holder from its left and right sides to disengage the claws on the sun visor holder sides.



<> HEADLINING ASSEMBLY REMOVAL

To remove the clip, insert a vinyl cord into a clearance between the clip and the headlining, and pass it around the clip. Then, pull out the clip downwards while pulling the vinyl cord.

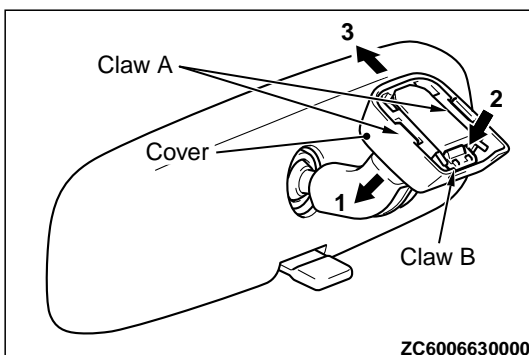


INTERIOR MIRROR

M15201000026USA0000010002

REMOVAL SERVICE POINT

1. Disengage the claw A and lower the cover toward arrow 1 direction.
2. Push the claw B toward arrow 2 direction to unlock, and pull out the mirror toward arrow 3 direction.



SEAT ASSEMBLY

FRONT SEAT ASSEMBLY

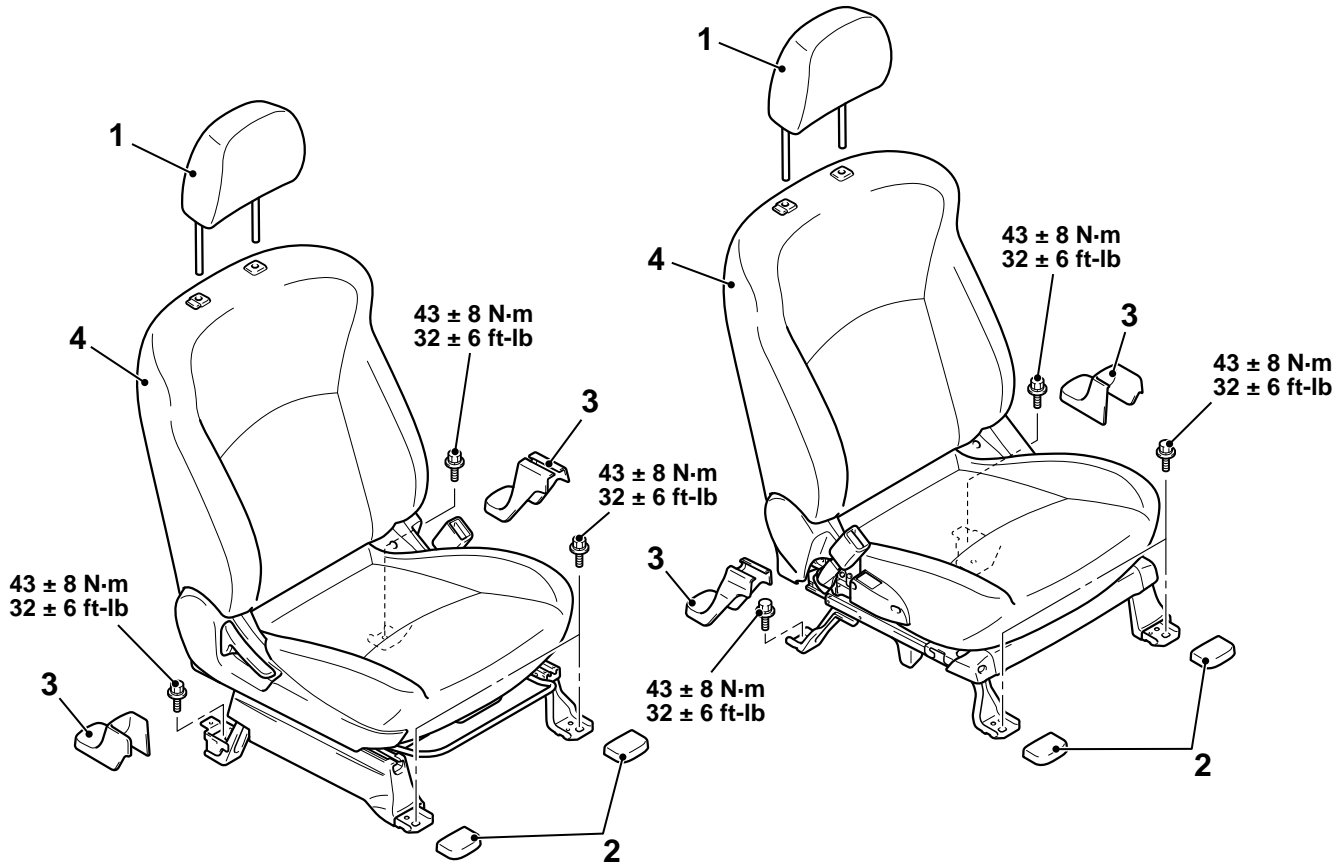
REMOVAL AND INSTALLATION

M15201000102USA0000010000

Precautions P.52B-28and Curtain Air Bag
Module P.52B-341.

CAUTION

To remove the front seat assembly of vehicle with side air bag, refer to GROUP 52B - Service



ZC600855AA00

Removal steps

1. Headrest
2. Front seat anchor cover
3. Rear seat anchor cover

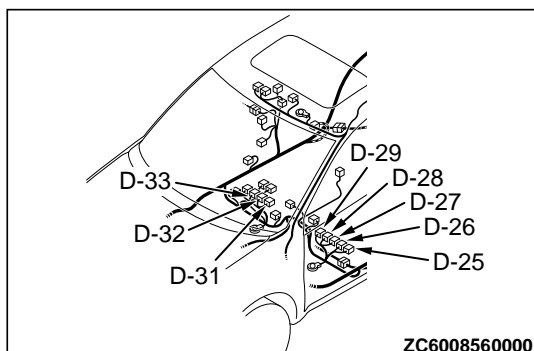
Removal steps

- <<A>> · Wiring harness connectors
>>A<< 4. Front seat assembly

REMOVAL SERVICE POINTS

<<A>> WIRING HARNESS CONNECTOR DISCONNECTION

Disconnect the following wiring harness connectors:

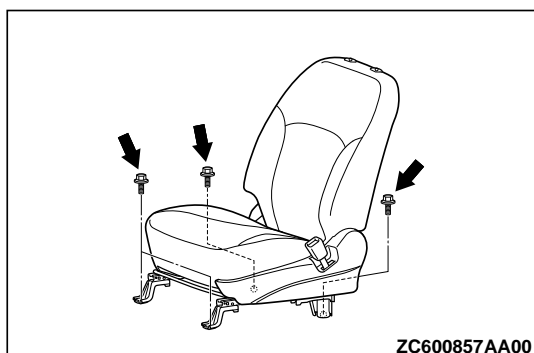


Connector number	Connector name
D-25 (2)	Power seat connector (driver's seat) vehicle with power seat
D-26 (4 -)	Heated seat connector (driver's seat) vehicle with heated seat
D-27 (4 -)	Seat slide sensor connector (driver's seat)
D-28 (2 -)	Seat belt switch connector (driver's seat)
D-29 (2 -)	Side air bag module (squib) connector (driver's seat) vehicles with side air bag
D-31 (2 -)	Side air bag module (squib) connector (front passenger's seat) vehicles with side air bag
D-32 (2 -)	Seat belt switch connector (front passenger's seat)
D-33 (4 -)	Heated seat connector (front passenger's seat) vehicle with heated seat

INSTALLATION SERVICE POINTS

>>A<< FRONT SEAT ASSEMBLY INSTALLATION

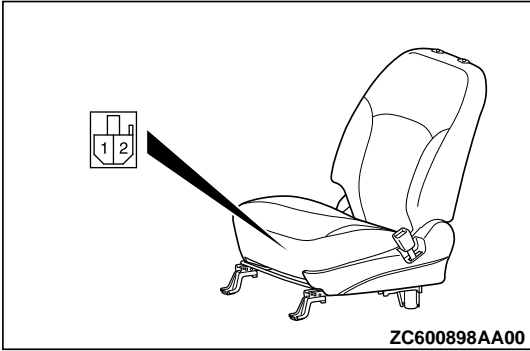
1. Confirm that both the seat slides are locked, and then temporarily tighten all the bolts shown in the figure so that no load is applied to the front seat cushion.
2. Tighten all the bolts to the specified torque.



INSPECTION

M15201000110USA0000010000

Connect the + terminal of the battery to the power seat connector terminal No. 2 and the - terminal to terminal No. 1, and check that the power seat works normally.

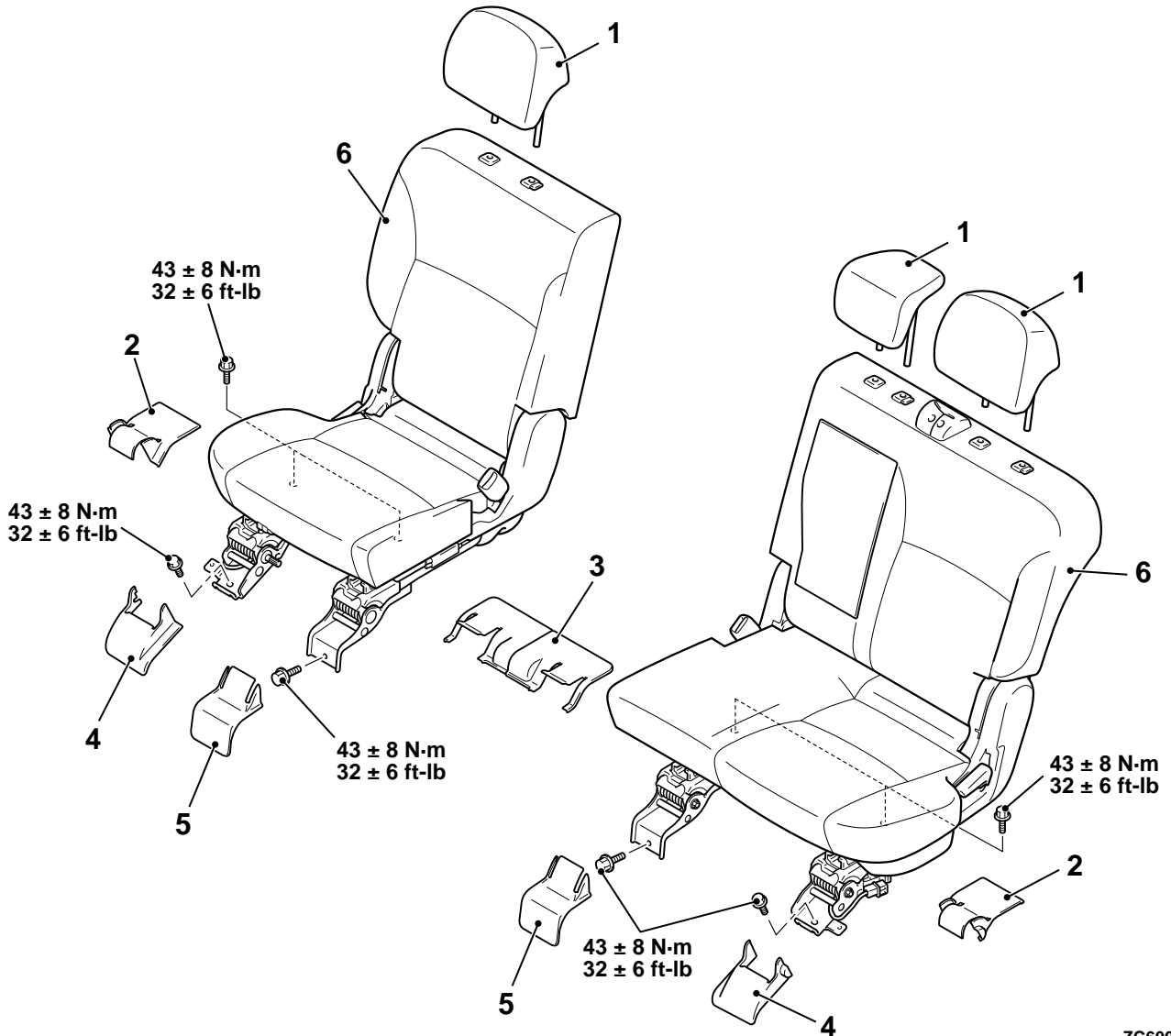


ZC600898AA00

SECOND SEAT ASSEMBLY

REMOVAL AND INSTALLATION

M15201000106USA0000010000



ZC6007100000

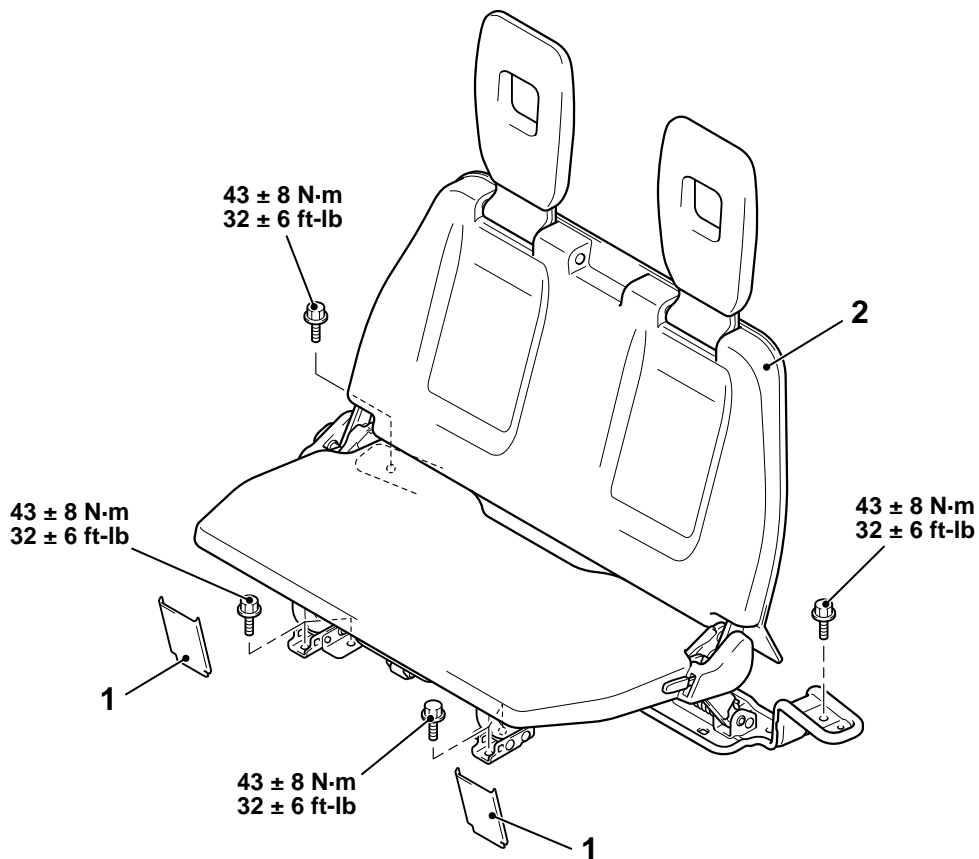
1. Headrest
- Removal steps**
- Scuff plate rear (Refer to P.52A-10).
2. Rear anchor cover outer
 3. Rear anchor cover inner

- Removal steps**
4. Front anchor cover outer
 5. Front anchor cover inner
 6. Rear seat assembly

THIRD SEAT ASSEMBLY

REMOVAL AND INSTALLATION

M15201000108USA0000010000



ZC900709AA00

Removal steps

1. Anchor cover

Removal steps

2. Third seat assembly

SEAT BELT

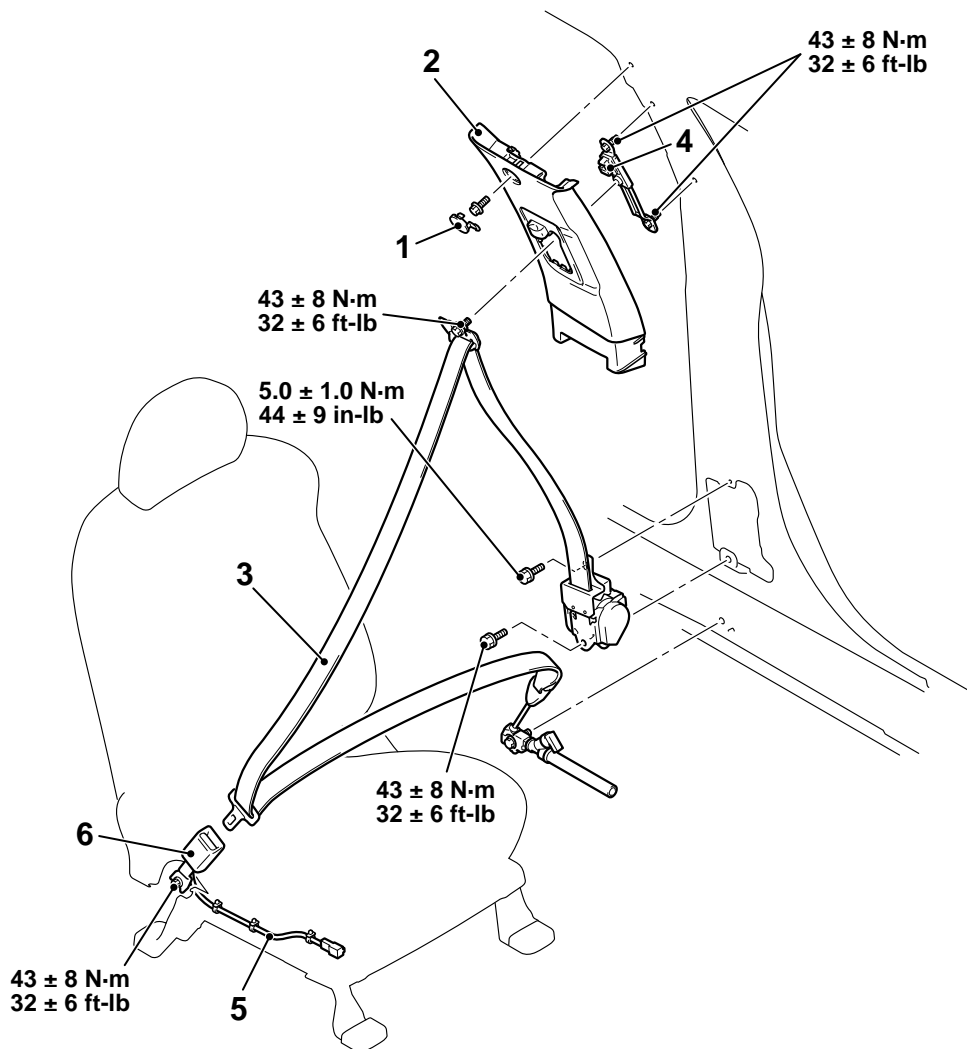
FRONT SEAT BELT

REMOVAL AND INSTALLATION

CAUTION

For the removal of the seat belt with pre-tensioner, refer to GROUP 52B - Service Precautions (Refer

M15201000115USA0000010001
to P.52B-28) and Seat Belt with Pre-tensioner (Refer to P.52B-345).



ZC6006940000

Outer seat belt removal steps

- Front scuff plate, scuff plate rear, center pillar trim lower (Refer to P. 52A-10).
- 1. Center pillar trim plug
- 2. Center pillar trim upper (Refer to P. 52A-10).

Outer seat belt removal steps

- 3. Outer seat belt
- 4. Adjuster seat belt anchor

Inner seat belt removal steps

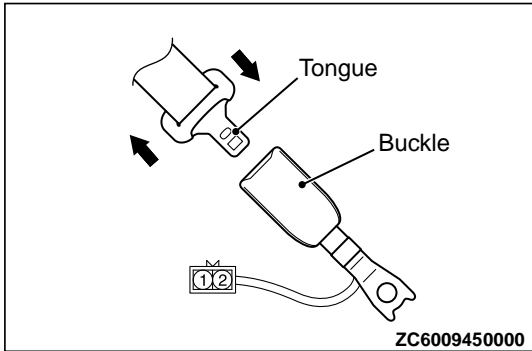
- 5. Seat belt switch connector
- 6. Inner seat belt

INSPECTION

M15201000122USA0000010000

INSPECTION OF SEAT BELT SWITCH FOR CONTINUITY

If there is no continuity, replace the inner seat belt.

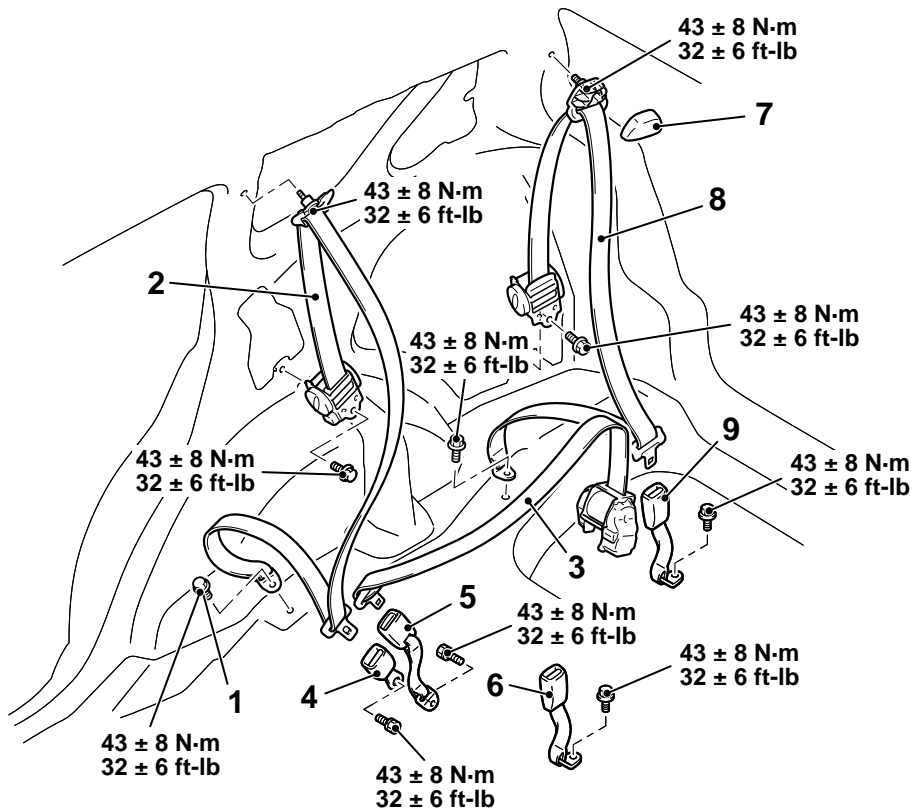


Item	Terminal number	Normal conditions
Seat belt is used	1 - 2	No continuity
Seat belt is not used		Continuity exists (2Ω or less)

REAR SEAT BELT

REMOVAL AND INSTALLATION

M15201000117USA0000010001



Second seat belt (outer) removal steps

1. Seat belt side lower anchor bolt

Second seat belt (outer) removal steps

Scuff plate rear, quarter trim lower, quarter trim upper (Refer to P. 52A-10).

ZC603528AA00

Second seat belt (outer) removal steps

- Lower liftgate trim (Refer to P.52A-14).
- 2. Seat belt side
- Seat cushion assembly (LH) (Refer to P.52A-21).
- 3. Seat belt center

Second seat belt RH and center (inner) removal steps

- 4. Inner seat belt side (RH)
- 5. Inner seat belt center

Second seat belt LH (inner) removal steps

- Seat cushion assembly (LH) (Refer to P.52A-21).

Second seat belt LH (inner) removal steps

- 6. Inner seat belt

Third seat belt removal steps <7-seater>

- 7. Third seat belt sash guide cover
- Quarter trim lower, Quarter trim upper (Refer to P.52A-10).
- 8. Outer seat belt
- 9. Inner seat belt

52A-26

INTERIOR

MEMO